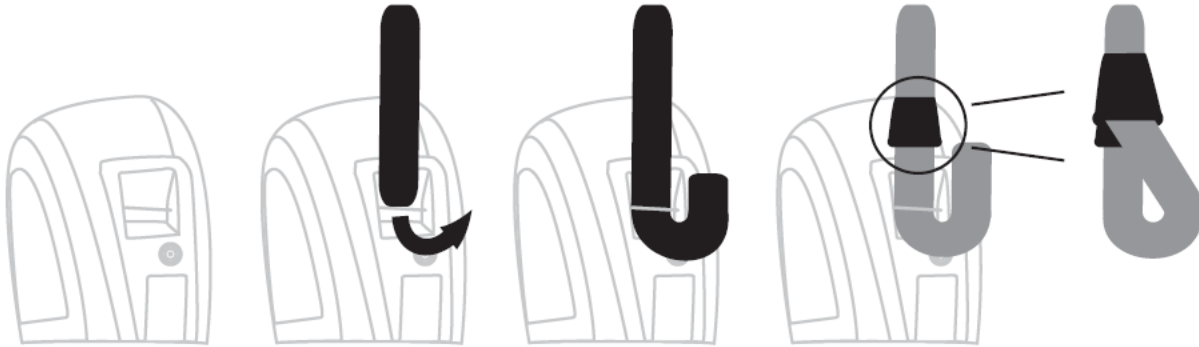


RENASYS GO Carry Strap

The carry strap is designed to be a single-patient use item.



To attach the carry strap to device:

1. Feed end of open strap behind location pin.
2. Pull the strap through and feed the end behind the clip.
3. Close clip to secure strap.
4. Repeat steps 1-3 on other side of device.

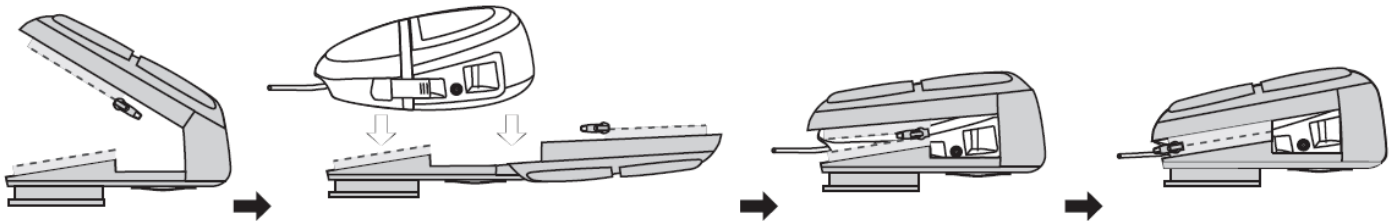
Once both sides are connected to the device they can be joined together to make the short carry strap. The short carry strap can be used to attach the device to a wheelchair or IV pole when moving patients.

Extension Strap

The strap can be extended to allow the device to be carried on the shoulder or across the body. Place the padded section of the strap against shoulder for maximum comfort when carrying device.

RENASYS GO Carry Bag *(for use with 300ml canister only)*

The carry bag is designed to be a single-patient use item.



To place the device into the bag:

1. Open the zip on both sides of the bag and place on a flat surface with viewing flaps on top.
2. Place the device on top of the open section of the bag.
3. Pull the front of the bag over the top of the device and feed both parts of one zip together.
4. Close the zip on the other side of the bag.
5. Once fitted ensure the canister tubing can move freely.
6. Excess tubing can be coiled and placed in the pouch on the back of the bag.

Flaps on the top of the bag are for the privacy of the user.

On the rear of the bag there is a belt loop should the patient wish to wear RENASYS[®] GO around their waist.

